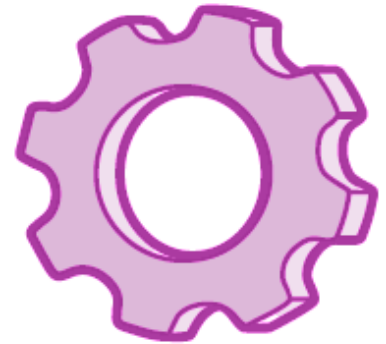


Ed-Fi ODS / API v2.2



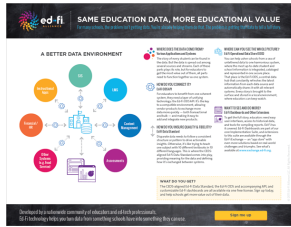
Previous Version

This is a previous version of Ed-Fi technology. Visit the [Ed-Fi Tech Docs home page](#) for a link to the current version, or the [Ed-Fi Technology Version Index](#) for links to all versions.



Documentation & Download Home

Born from the practical needs of our community, the Ed-Fi ODS / API gives you a simpler, more cost-effective way of connecting and maintaining systems, helping you turn data from something you have into something you can use.



Ed-Fi ODS / API - A Better Data Environment
[Click here for a summary of the technology at work.](#)

Documentation

Documentation for the Ed-Fi ODS / API v2.2 is viewable online:

- [What's New in v2.2](#)
- [Getting Started](#)
- [Platform Developers' Guide](#)
- [API Client Developers' Guide](#)
- [Technical Reference Material](#)
- [How-To Guides](#)
- [Technical Articles](#)

Downloads

The following v2.2 technical material is available for download:

- [Ed-Fi-ODS](#) source code (GitHub*)
- [Ed-Fi-ODS-Implementation](#) source code (GitHub*)
- [API Profiles Project Template](#) (C# Source)
- [API SDK Sample Code](#) (C# Source)
- API Extensibility Sample Code - [Student Transportation](#) and [Student Transcript](#) (C# Source, SQL, XML)
- [Data Mapping Template - ODS / API v2.2](#) (Excel)

* A login is required to access the GitHub source code repositories. Click [here](#) for more information. Note that GitHub returns a 404 Page Not Found error if you are not logged in.

This site contains the latest version of the Ed-Fi ODS / API, Version 2.2.

- Looking for previous versions of the Ed-Fi ODS / API? Visit the [Ed-Fi Technology Version Index](#).
- Looking for another Ed-Fi Technology? Visit the [Ed-Fi Technical Documentation Home Page](#).